

BentoIO CMX1

Documentation

V1.4

Power Management

Power Management

Via USB-C Power Supply

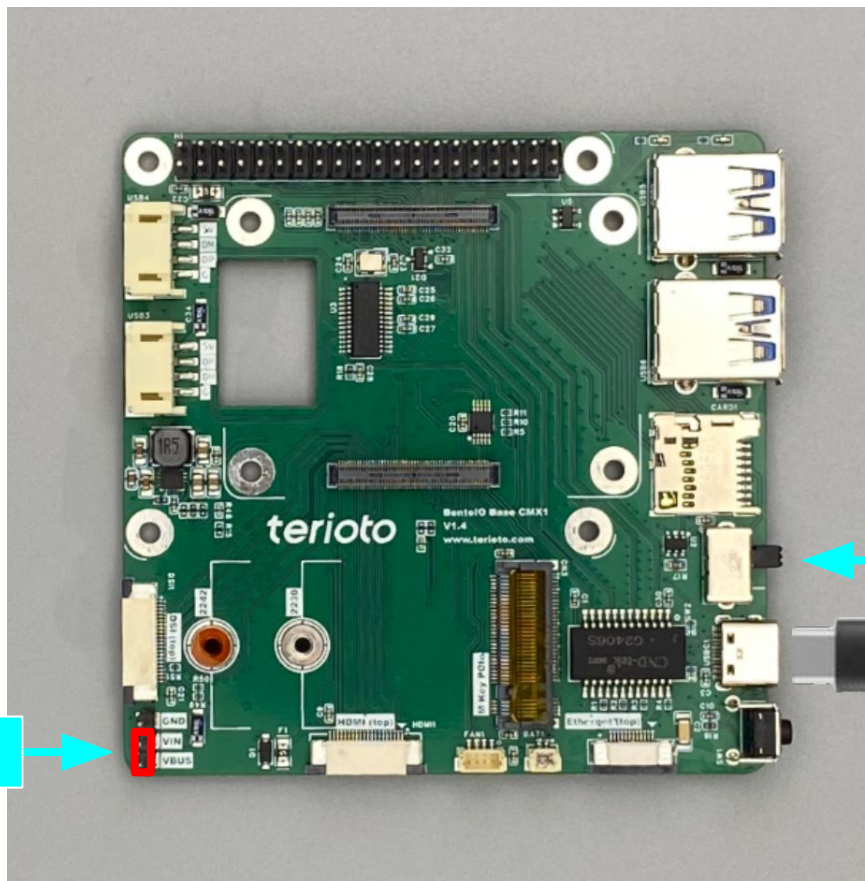
- Requires power supply with **minimum output of 25 W**
- Compatible with **5 V USB-C PD (Power Delivery) chargers**
- To enable power routing, place a jumper between **VIN** and **VBUS**
-



Power Warning

Only **one power source** should be connected to the BentoIO CMX1 at a time. Connecting **both power sources simultaneously** may **damage the board** and connected devices.

Jumper



Switch "Boot"

Power Management

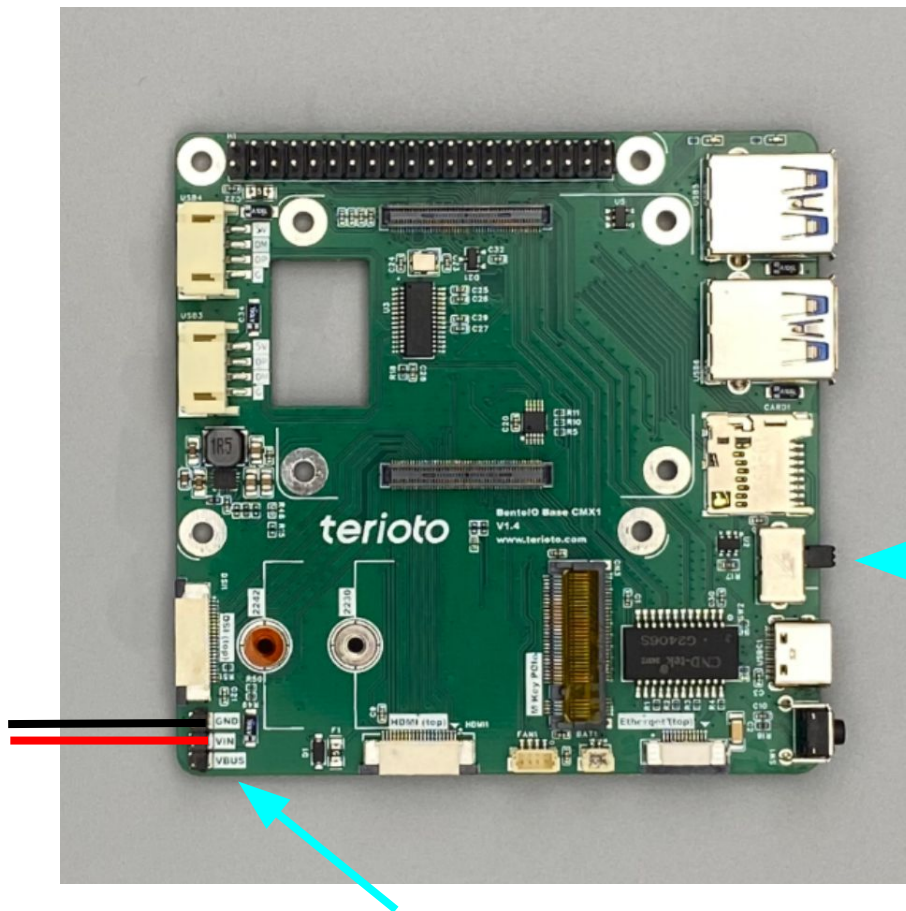
Via internal pin

- Requires power supply with **minimum output of 25 W**
- Power Input
 - **GND** = Ground
 - **VIN** = +5V



Power Warning

Only **one power source** should be connected to the BentiO CMX1 at a time.
Connecting **both power sources simultaneously** may **damage the board** and connected devices.



Power Management

Via GPIO pins

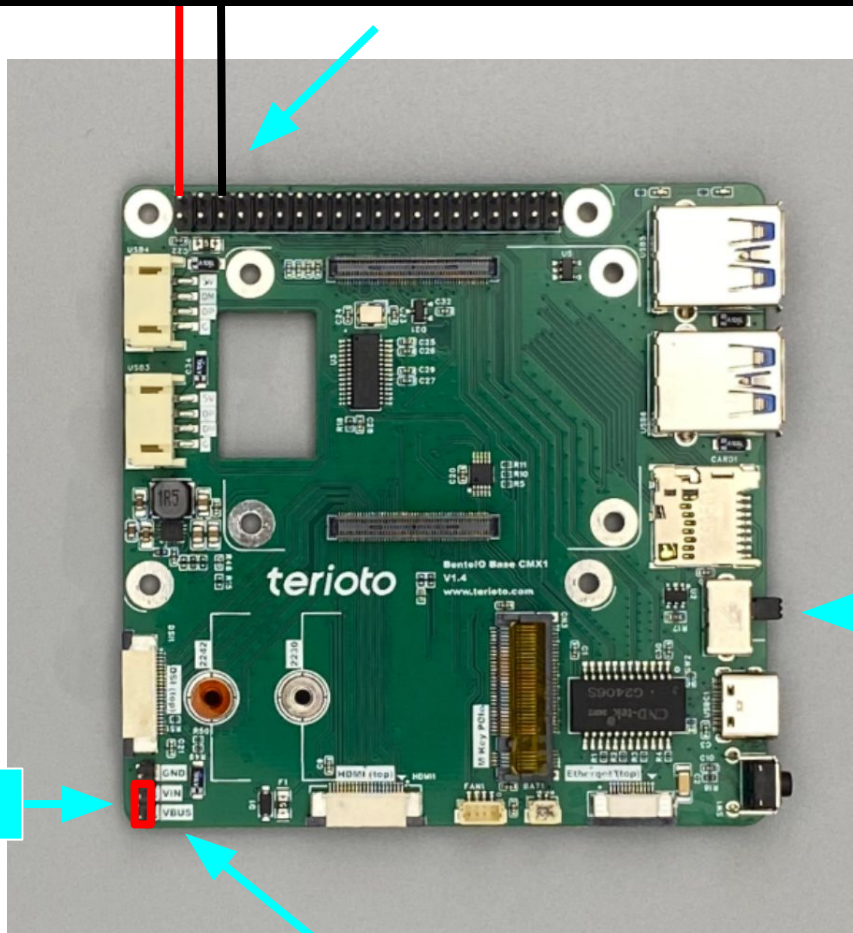
- Requires power supply with **minimum output of 25 W**
- To enable power routing, place a jumper between **VIN** and **VBUS**
- GPIO Power Input
 - **Pin 2** = +5 V
 - **Pin 6** = Ground



Power Warning

Only **one power source** should be connected to the BentiIO CMX1 at a time. Connecting **both power sources simultaneously** may **damage the board** and connected devices.

Jumper



Switch "Boot"

Contact

terioto

Halil Kleinmann
Rosenaustr. 8
90429 Nürnberg
Germany

Web: www.terioto.com
Mail: info@terioto.com
Phone: +49 015776811086